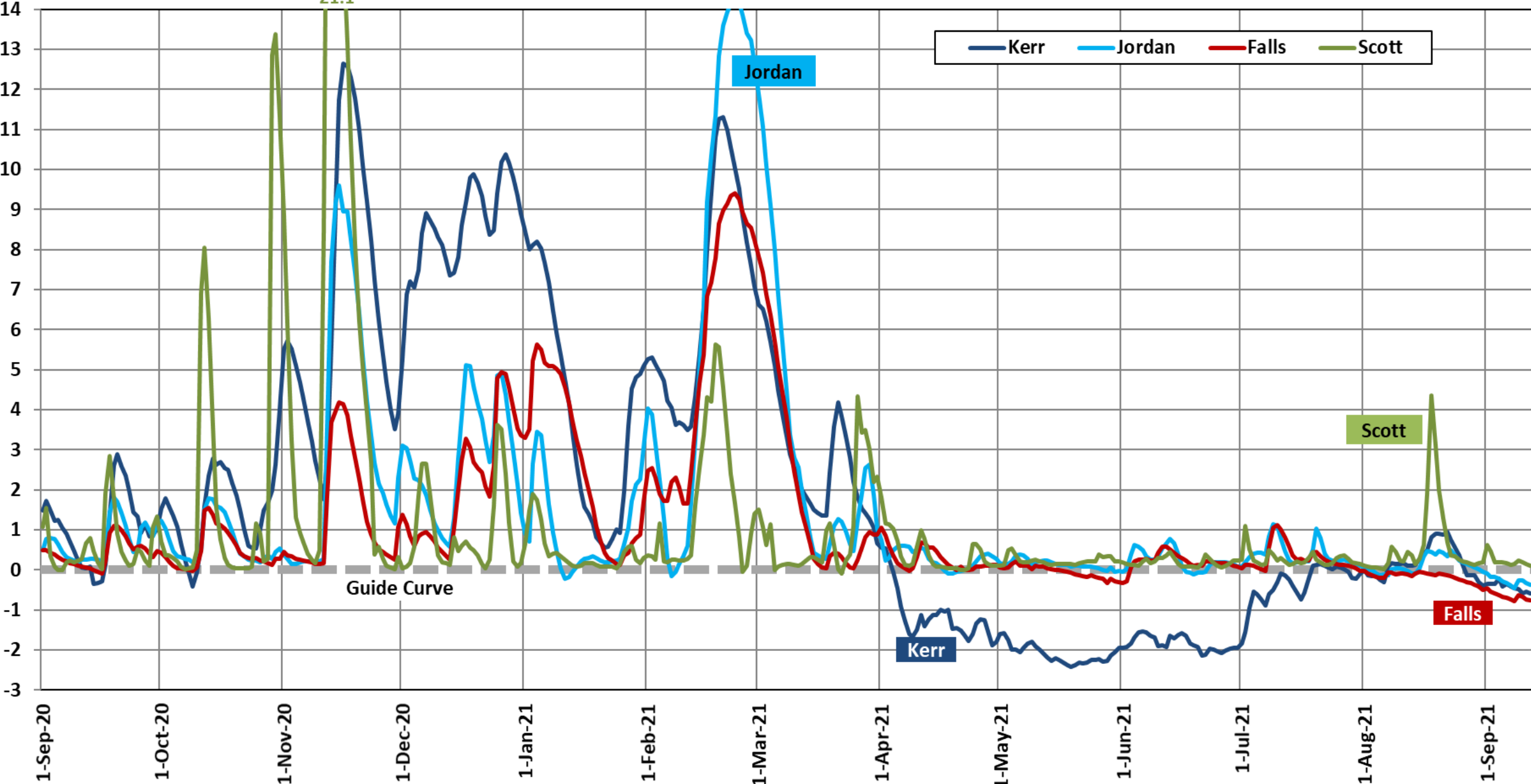
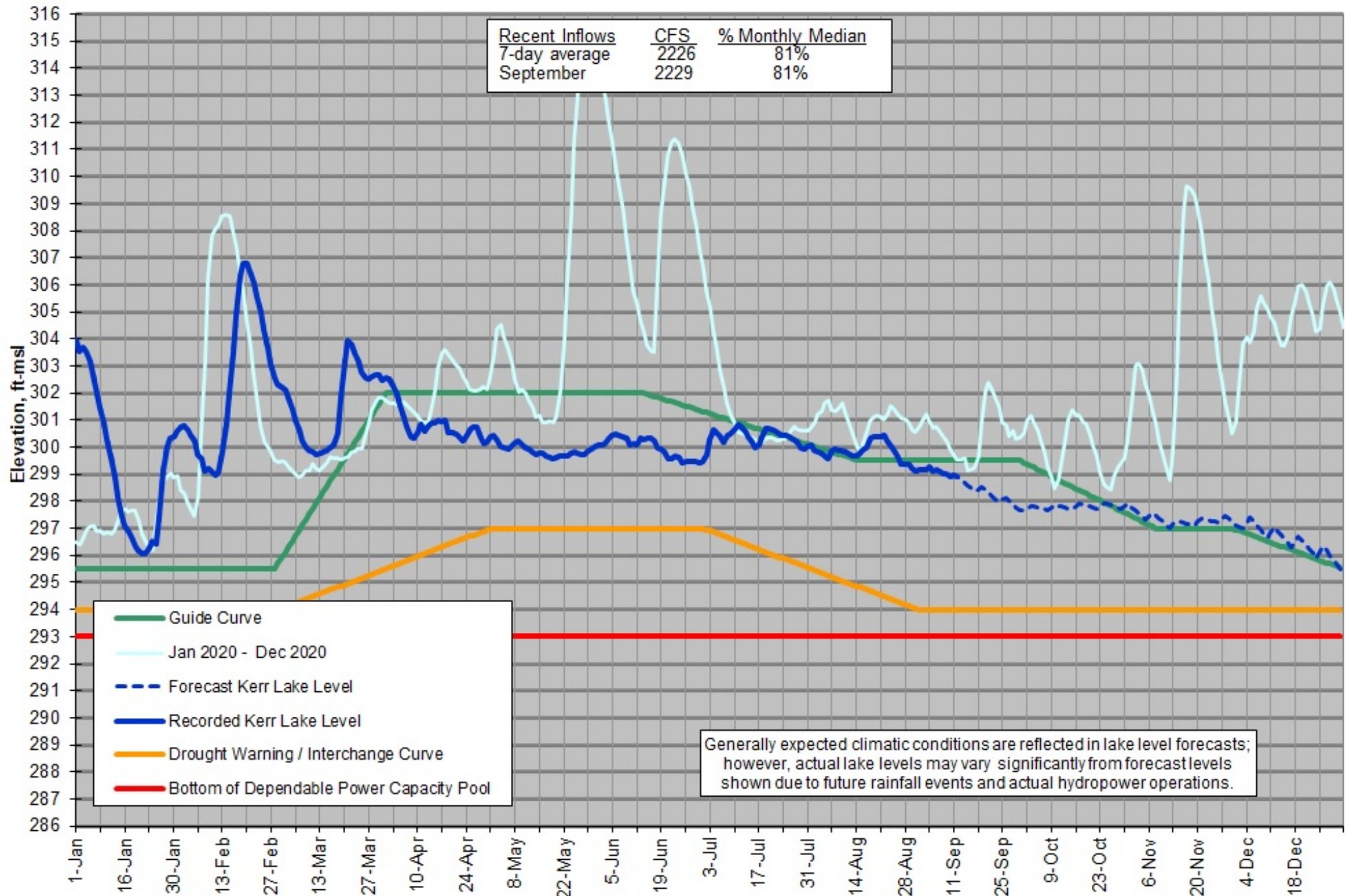


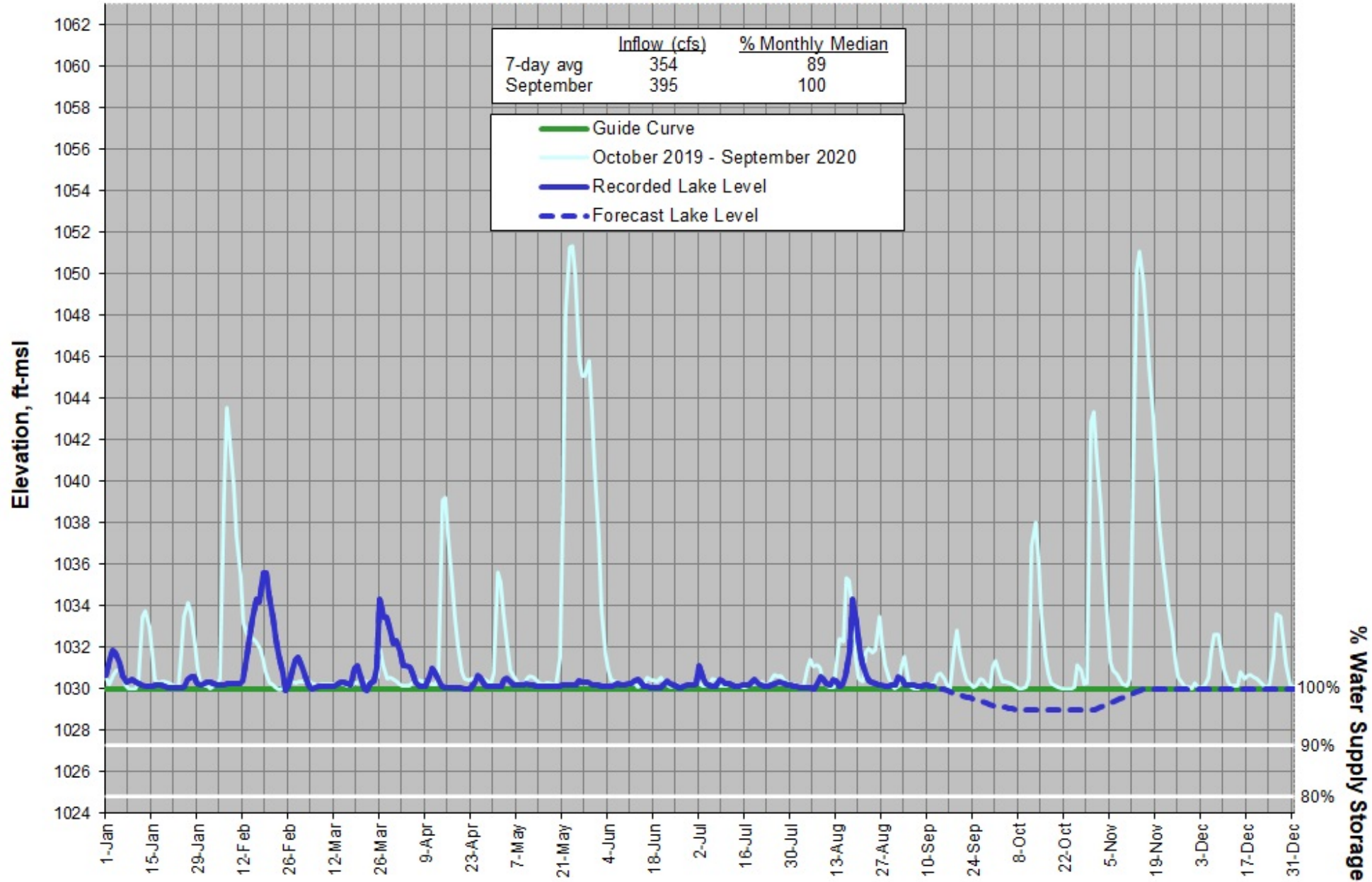
Corps Reservoir Levels Since 1-Sep-2020 (Feet Above or Below Guide Curve)



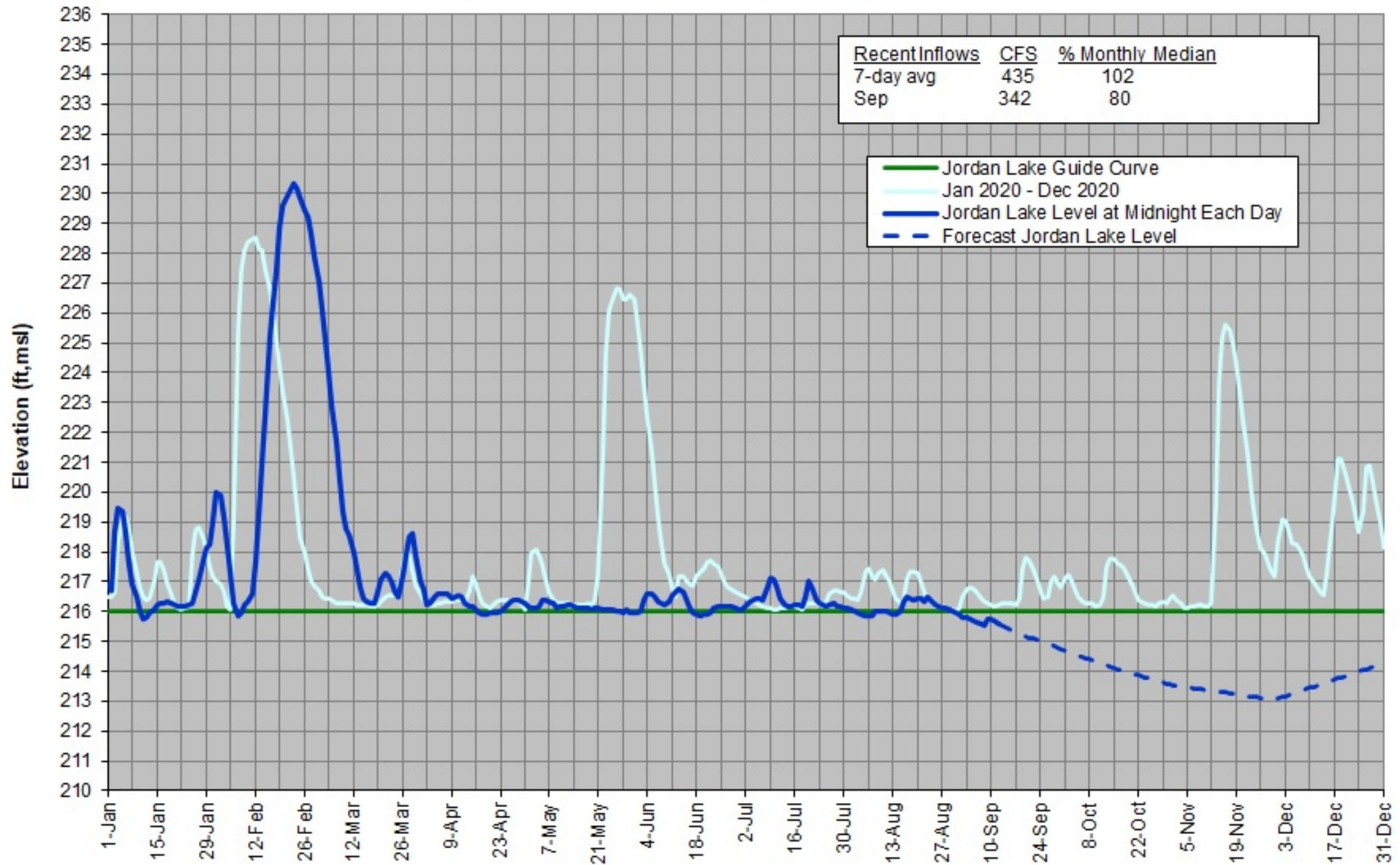
John H Kerr Lake Level Forecast -- 13 September 2021 (Based on 75% of Monthly Median Inflows)



**W. Kerr Scott Lake Level -- 13 September 2021
(Assuming 75% Monthly Median Inflows)**



Jordan Lake Level -- 13 Sep 2021 (Based on ~ 50% avg monthly median inflows)



Falls Lake Level -- 13 September 2021 (Based on ~25% monthly median inflows)

